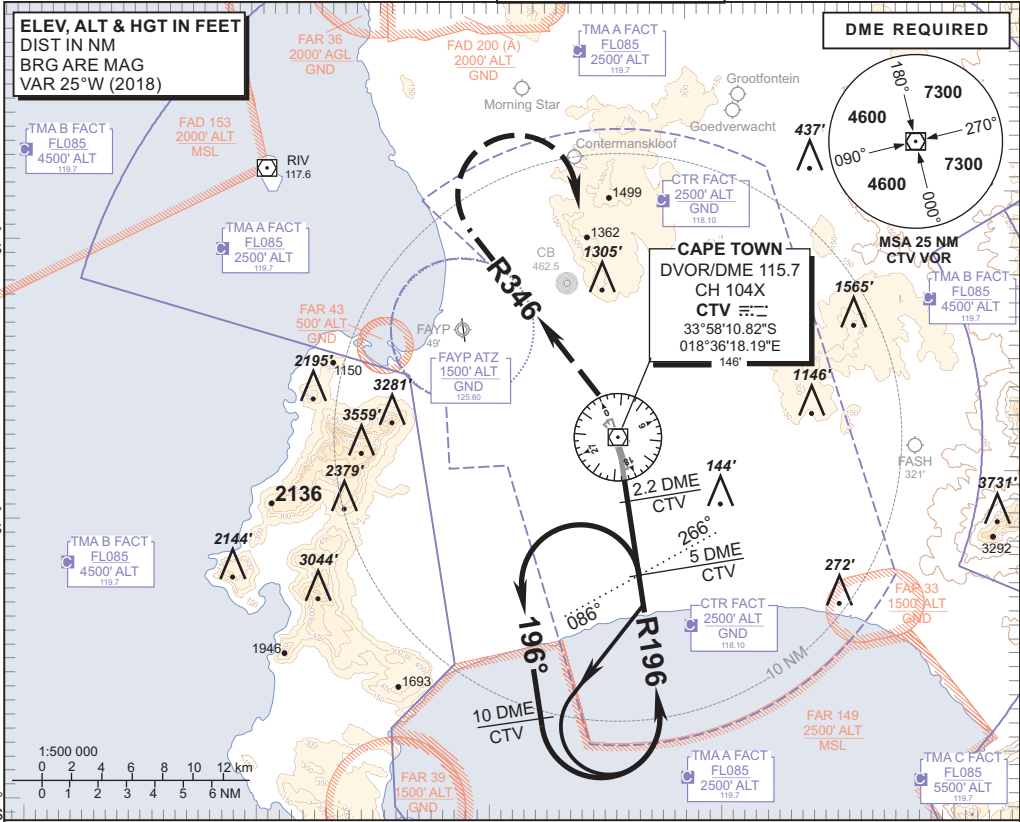


**INSTRUMENT APPROACH CHART**

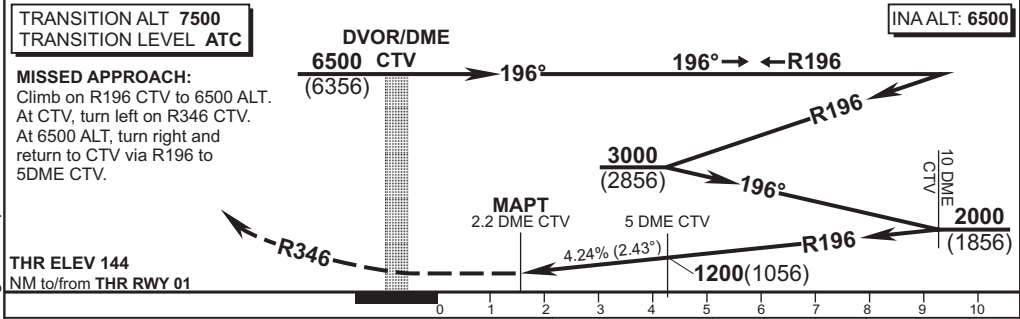
**AERODROME ELEV 151'**  
 HEIGHTS RELATED TO  
 THR RWY 01 - ELEV 144'

APP 119.70  
 TWR 118.10  
 SMC 121.90  
 ATIS 127.00

**CAPE TOWN INTL**  
**VOR Z RWY 01**  
 CAT A - D



<b>CTV DME</b>	5	4	3			
<b>ADVISORY ALT (HGT)</b>	1200 (1056)	950 (806)	690 (546)			



<b>OCA (H)</b>					<b>GS</b>	<b>KT</b>	80	100	120	140	160
Straight-in					5 DME CTV to THR	M:S	2:55	2:20	1:57	1:40	1:27
Approach					Rate of descent	FPM	344	430	516	602	688
<b>NOTE:</b>					1. Descend in the hold to 3000' ALT.						
					2. Procedure Turn Approach applicable only within 30° of the OUBD HDG. Use phraseology "Request Procedure Turn Approach".						
					3. 5 DME CTV to THR, RoD computes at 2.43°.						
<b>Circling</b>					1. Circling approaches between 010°M & 160°M are not authorised for CAT C & D aircraft.						
					2. Circle to land at the discretion of the pilot in command.						

APP Frequency changed only  
 CHANGE: No other changes were performed